



THE GIBBERD GARDEN

MARSH LANE, GILDEN WAY, HARLOW, ESSEX CM17 0NA | TELEPHONE 01279 442112



- home
- sir frederick gibberd
- the sculptures
- the garden
- future events
- location map
- facilities
- group bookings
- school facilities
- archive
- contact us

Group Bookings

Minimum number = 10.

To make a group booking please telephone 01279 442112.

Open Days

Wednesday, Saturday, Sunday and Bank Holidays from 2pm to 6pm.

Adults £4.00; concessions (over 60 and students) £2.50. Single payment to be made for the whole group.

At Other Times

£4.00 per person; no concessions. Single payment to be made for the whole group.

Suggested time required for visit
2 hours.

PLEASE NOTE

Paths may be slippery, even in dry weather, and some plants are poisonous.

Coaches

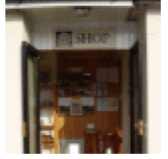
The lane from the main road is 1/2 mile long and has three 90° turns. It is NOT suitable for 50+ seater coaches. Mini buses and 33 seater coaches can be accepted by prior arrangement only.

Special Functions

Except for public Open Days, the barn is available with all its facilities for parties, business meetings, conferences, etc, with use of the garden, at £30.00 per hour plus £3.00 per adult in the party.

Weddings

Fridays only. For full details and hire charges please contact the garden on 01279 442112 with the proposed date.



© 2005 The Gibberd Garden Trust

Opening Times : April to September 2pm to 6pm Wed/Sat/Sun & Bank Holidays
Entrance Fees : £4.00 (concessions £2.50, children aged 6-16 £1.00, under 6 free)