



THE GIBBERD GARDEN

MARSH LANE, GILDEN WAY, HARLOW, ESSEX CM17 0NA | TELEPHONE 01279 442112

[home](#)

[sir frederick gibberd](#)

[the sculptures](#)

[the garden](#)

[future events](#)

[location map](#)

[facilities](#)

[group bookings](#)

[school facilities](#)

[archive](#)

[contact us](#)

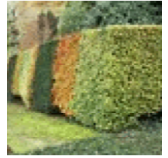
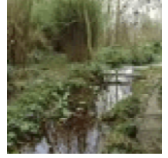


The garden is sited on the side of a small valley which slopes down to the Pincey Brook. Occupying some seven acres, it never had a master plan. Sir Frederick was an intuitive gardener with a clear idea of what he wanted. If it worked, well and good; if it didn't, root it out and try something else!

The glades, pools, lawns and alleys he designed provide settings for some eighty sculptures, large ceramic pots and architectural salvage. There is a gazebo, an avenue of lime trees, a waterfall in the brook and even a children's moated castle with drawbridge!

In Sir Frederick's own words: "Garden design is an art of space, like architecture and town design. The space, to be a recognisable design, must be contained and the plants and walls containing it then become part of adjacent spaces. The garden has thus become a series of rooms, each with its own character, from small intimate spaces to large enclosed prospects."

A visit to the Garden will perfectly illustrate this philosophy.



Opening Times : April to September 2pm to 6pm Wed/Sat/Sun & Bank Holidays
Entrance Fees : £4.00 (concessions £2.50, children aged 6-16 £1.00, under 6 free)