



# THE GIBBERD GARDEN

MARSH LANE, GILDEN WAY, HARLOW, ESSEX CM17 0NA | TELEPHONE 01279 442112

home

sir frederick gibberd

the sculptures

the garden

future events

location map

facilities

group bookings

school facilities

archive

contact us



© 2005 The Gibberd Garden Trust

## Car Parking

Parking is free and we would ask all drivers to use the car park in the grounds, unless full, when it is generally possible to park just outside the entrance.

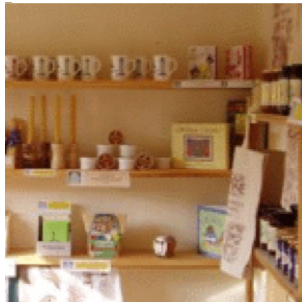
## Refreshments

The tea room is situated in the barn just inside the main entrance. Home-made cakes, scones, tea, coffee and soft drinks are served until 30 minutes before the garden closes.



## Toilets

The toilets are located just inside the main entrance by the tea room. There are disabled facilities.



## Shop

There is a small shop where a variety of mainly garden related items are on sale, as well as postcards, maps of the garden and a souvenir book 'Sir Frederick Gibberd and his Garden'.

## Dogs

Dogs are permitted in the Garden if kept on a lead but you must be prepared to 'clean up' after your pet if necessary!

## Picnics

There is a picnic area immediately opposite the Barn, but as we have no rubbish collection we would ask you to take your wrappings and bottles away with you.

## Talks

Arrangements can be made for a Trust Committee Member to come out to Clubs and Societies and give a talk about the Garden and Sir Frederick, illustrated with slides. The cost of this is normally £25.00. Please telephone 01279 442112 to arrange.

Opening Times : April to September 2pm to 6pm Wed/Sat/Sun & Bank Holidays  
Entrance Fees : £4.00 (concessions £2.50, children aged 6-16 £1.00, under 6 free)

